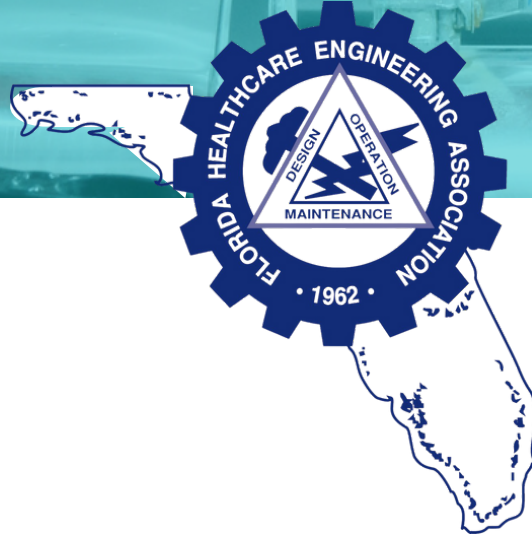


# THE WHISTLE

## FLORIDA HEALTHCARE ENGINEERING ASSOCIATION



### THE PRESIDENT'S CORNER

**Bobby Baird, SASHE, CHE, CHFM, CHSP, CHC**

Holiday Greetings FHEA Members,

As 2021 ends, we are all looking forward to 2022! Please accept my sincere thanks to our State Board of Directors, committee chairs, and District officers who have been flexible this year in planning the various FHEA programs and activities. We especially appreciate everyone who invested their time to support the FHEA and its members by hosting virtual meetings and conducting webinars on cutting-edge topics.

The FHEA is dedicated to supporting education by giving scholarships to promote training in the field of facilities management. This year, the FHEA provided a \$2,500 scholarship. Our FHEA Districts also awarded scholarships to deserving students. The FHEA has continued to support the Science Screen project, a STEM educational endeavor that is offered throughout Florida schools. To learn more about this program, visit [www.ssrvideo.com](http://www.ssrvideo.com)

At the ASHE Annual Meeting in Nashville, the FHEA once again received the Platinum award. Recognized as the highest award level, Platinum-level chapters are committed to their partnership with ASHE through their support of ASHE's long-range plans and objectives.

### INSIDE THIS ISSUE:

- President's Message - 1 & 10
- FHEA Annual Meeting - 2 - 4
- FHEA Sponsors - 5 - 8
- FHEA Exhibitors - 9 - 10
- Advocacy Advisor - 11
- FHEA Golf Tournament - 11
- Joint Commission Update - 12
- FHEA Awards - 13 - 14
- District Highlights - 15
- Educational Articles - 16 -18
- New Supporting Members - 19 - 20
- FHEA New Board - 21

I want to welcome our 2022 FHEA President, Lamar Bragg, and our Vice President, Adam Mayle. Lamar and Adam are both veterans in the industry and have dedicated their time as FHEA board members, committee chairs, and District officers for several years. I am confident under their leadership, the FHEA will continue to grow in membership and provide excellent education and resources to professionals in the healthcare engineering industry.

Please save the date for our upcoming June 1 – 3, 2022 Annual Meeting, “Perseverance and Pride: Moving Forward.”

*(Continued on page 10)*

59th

# FHEA Trade Show and Annual Educational Conference

June 1 - 3, 2022

*Perseverance and Pride: Moving Forward*

Caribe Royale, Orlando



**CARIBE ROYALE**

8101 World Center Drive, Orlando FL 32821

## RESERVE YOUR ROOM

To make your room reservation at the Caribe Royale in Orlando, call 888.258.7501. Be sure to mention the FHEA for our group rate.

For FHEA members who book using the link or by calling the hotel, resort fees will be waived and self-parking will be complimentary.

[» BOOK YOUR ROOM](#)

## KEYNOTE SPEAKERS



**Jessica Lynch**

Ex-POW Iraq 2003

*Keynote Sponsor:  
Advanced Roofing Inc.*



**Dr. Dale Henry**

*Keynote Sponsor:  
First Onsite*

## REGISTRATION

[» REGISTER NOW](#)

FHEA Healthcare Engineer Members (\$65.00)

FHEA Certified Engineers (CHE) (\$55.00)

FHEA Life Members (Complimentary)

FHEA Supporting Member (\$95.00)

Non-members (\$150.00)

*(Prices are for registrations made prior to April 1, 2022; after that date add \$25 to all fees)*

FHEA ANNUAL MEETING SCHEDULE

**Wednesday, June 1, 2022**

7:15 am

FHEA Golf Registration at Falcon's Fire

8:00 am

FHEA Golf Tournament - Shotgun Start

2:30 - 5:00 pm

FHEA Board Meeting

5:30 - 6:30 pm

FHEA Engineers, Supporting Members, Exhibitors, and Sponsors "Meet n Greet" Reception

**Thursday, June 2, 2022**

7:00 am

FHEA Trade Show - Exhibitor Set-up

7:45 am

FHEA Registration and Continental Breakfast (for educational session attendees)

8:30 am

Welcome to the 59th FHEA Trade Show and Educational Conference  
Lamar Bragg, CHFM - FHEA President

8:45 - 10:30 am

FHEA Opening Session: "Sailing the Winds of Change"

Dr. Dale Henry

Sponsor: First Onsite

10:45 - 11:00 am

Gathering Break

11:00 am - 12:00 pm

"Engineered Infection Protection"

Carmen Gonzalez, Franke Commercial Systems

12:00 - 1:15 pm

FHEA Luncheon (for educational session attendees)

1:15 - 3:15 pm

"NFPA Standards: The Process, Participation, and Possibilities on the Horizon"

James "Robby" Dawson, MBA, CFO, National Fire Protection Association

(The leading information and knowledge resource on fire, electrical, and related hazards.)

FHEA ANNUAL MEETING SCHEDULE

3:30 - 4:30 pm

Keynote Address: "Through the Rain-The Power of Perseverance and Perspective in Overcoming Challenges"

Jessica Lynch

Sponsor: Advanced Roofing Inc.

4:30 - 6:30 pm

FHEA Trade Show and Welcome Reception AND Book-signing with Jessica Lynch

8:30 - 10:30 pm

FHEA After Hours Casino Party

**Friday, June 3, 2022**

7:30 am

Continental Breakfast in FHEA Trade Show

7:30 am - 2:30 pm

FHEA Trade Show

9:00 - 10:00 am

"Rethinking Ventilation: Design to Protect Staff and Patients from Airborne Contamination"

Kathy Warye, CEO, Infection Prevention Partners

10:00 - 11:00 am

"Finding the Right Talent: Strategies to Improve Healthcare FM Recruitment, Retention, and Succession Planning"

Steven A. Call, PhD., Assistant Professor in the School of Design & Construction,

Washington State University

11:00 - 11:30 am

Morning Break in the FHEA Trade Show

11:30 am - 12:30 pm

"How and Why to Plan and Design for the "What-if Scenario"

Gary Schindele, Logistics and EMT, Central Florida Disaster Medical Coalition

Juan Atan, Battalion Chief, Orange County Fire/Rescue

12:30 - 2:30 pm

Informal Networking Luncheon in FHEA Trade Show (and door prizes)

2:30 - 3:30 pm

"An Exclusive Update from The Joint Commission for FHEA"

Jim Kendig, Field Director, The Joint Commission

3:30 - 4:30 pm

FHEA Annual Business Meeting and Closing Session

*The FHEA reserves the right to change topics, speakers, dates, and times due to unforeseen circumstances.*

FHEA ANNUAL MEETING SPONSORS

DIAMOND SPONSOR



MILLER ELECTRIC COMPANY  
*Powering the Possibilities*

GOLD SPONSORS

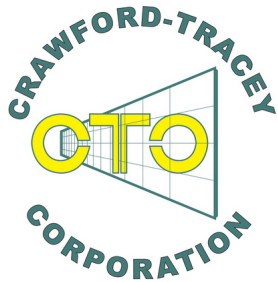


KEYNOTE SPEAKER SPONSORS



FHEA ANNUAL MEETING SPONSORS

SILVER SPONSORS



LANYARD SPONSOR



LUNCH SPONSOR



FHEA ANNUAL MEETING SPONSORS

BRONZE SPONSORS



MITCHELL & LINDSEY  
ELECTRICAL SAFETY SPECIALISTS



FHEA ANNUAL MEETING SPONSORS

RECEPTION DRINK TICKET SPONSORS



CONTINENTAL BREAKFAST SPONSORS



CASINO NIGHT SPONSORS



## FHEA TRADE SHOW EXHIBITORS

VIEW FHEA TRADE  
SHOW

AAF Flanders  
 Accoustiblok, Inc.  
 Acousti Engineering Company of Florida  
 ADT Commercial  
 Advanced Roofing  
 a-fabco, inc.  
 Airmax Service Corporation  
 Airsource Corporation  
 Airstron  
 All Phase Electric and Maintenance, Inc.  
 American Portable Air  
 Andrews Filter & Supply  
 APG Engineering  
 AquaDesign  
 ARC Facilities  
 Archer Western  
 ASCO Power Services Inc  
 ASCO Power Technologies  
 ASSA ABLOY Door Security Solutions  
 ASSA ABLOY Entrance Systems (Door Control)  
 Automated Door Ways  
 Barton Malow Builders  
 BeaconMedaes  
 Belfor Property Restoration  
 Bell Performance  
 Blue Pillar, Inc.  
 BMS CAT Inc.  
 Bonded Lightning Protection  
 Brady Infrared Inspections, Inc.  
 Brasfield & Gorrie  
 Building Engineering Consultants Inc.  
 C.A.R.E. LLC  
 Charles Perry Partners, Inc. (CPPI)  
 Chillmaster  
 CIC, Inc.  
 Clean Fuel & Tank  
 Coastal Mechanical  
 Commercial Products Corporation  
 Communication Access Services, Inc.

Consulting & Testing Services, Inc.  
 Crawford-Tracey Corporation  
 Creative Contractors Inc.  
 Davey Tree Expert Company  
 Davidson Sales Company  
 Debonair Mechanical  
 Delta Cooling Towers, Inc.  
 DERBIGUM Americas Inc.  
 Dryfast Recovery Systems LLC dba  
 Duct Dynasty  
 Dynamic Air Quality Solutions  
 EcoWater Systems  
 Electrical Reliability Services  
 Emerald Coast Roofing Resources, LLC  
 Engineered Energy Equipment, Inc.  
 Envinity  
 Enviralum Industries, Inc.  
 Environmental Diagnostics Laboratory  
 EOLA  
 ETS-Lindgren, Inc.  
 Evoqua Water Technologies  
 Fire & Life Safety America  
 Fire Door Solutions  
 First Onsite  
 Flad Architects  
 Flagship Fire, Inc.  
 FlexCart  
 Flow Control Technology Company LLC  
 FSI (Facilities Survey LLC)  
 Garratt-Callahan Company  
 GE Current, A Daintree Company  
 Golder Associates, Inc.  
 Grainger  
 Green Air Environmental, LLC  
 GTR BUSINESS SYSTEMS  
 Gulfstream Petroleum Services, Inc.  
 Hatchmed  
 Health Care Compliance, Inc.  
 Hensel Phelps  
 Hepacart, Inc.  
 Hilti  
 Homeyer Consulting Services, Inc.  
 IDeACOM Healthcare Communications of Florida, Inc.  
 Industrial Engineering Company  
 Innerface Architectural Signage, Inc.

Inpro Corporation  
 International Fire Protection  
 J Newton Enterprises, Inc.  
 Jantech Services, Inc.  
 Johnson Controls, Inc.  
 Johnson-Laux Construction  
 KHS&S Contractors  
 Kontrol Kube by Fiberlock  
 Krystal Klean  
 Lamphier & Company  
 Leviton Manufacturing Co., Inc.  
 LSS Life Safety Services  
 Magnum Door Solutions  
 MaintenX International  
 Mason Engineering  
 McEnany Roofing & Contracting, Inc  
 Medical Technology Associates, Inc.  
 MediTrac by OmegaFlex  
 Miller Electric Company  
 Mitchell & Lindsey  
 MJ Harris  
 Modular Services Company  
 Momar  
 MSI - Mechanical Services Emcor  
 Nalco Water an Ecolab Company  
 Nash Plumbing and Mechanical, LLC.  
 National Building Contractors, Inc.  
 Nephros, Inc.  
 NewAge Casting  
 Nexspan Healthcare, LLC  
 NFS Firestopping  
 Nora by Interface  
 Original Solutions Company, Inc.  
 P&A Roofing and Sheet Metal Inc.  
 Paladin Healthcare LLC  
 Pantera Technical Services Corp  
 PBA Design Group, Inc.  
 PDI Communication Systems, Inc.  
 Petroleum Recovery Services  
 PG LifeLink  
 Phigenics  
 Phoenix Products  
 Plunkett Raysich Architects, Inc.  
 Portable Air and Power  
 Powerex

## FHEA TRADE SHOW EXHIBITORS

PowerLogics, Inc.  
 PowerSecure, Inc  
 Premier Medical, Inc.  
 Premier Water & Energy Technology, Inc.  
 Project Management Advisors, Inc  
 Pure Air Control Services, Inc.  
 Pureflow Inc.  
 RAYMOND  
 Remediation Specialists, Inc.  
 RGF Environmental  
 Robins & Morton  
 Rockfon  
 McKim & Creed  
 S.I. Goldman Company, Inc.  
 Safe Check  
 Schaefer Company  
 Schneider Electric  
 SERVPRO Disaster Recovery Team  
 Sherwin Williams  
 SIEMENS Industry Inc.  
 Skanska USA Building Inc.  
 Smith Seckman Reid, Inc.  
 SOPREMA

Specialized Pipe Technologies  
 Specified Technologies, Inc.  
 SPIRAX SARCO INC  
 Spirit Group Inc  
 SPX Cooling Technologies/Marley  
 Stan Weaver & Company  
 Stanley Convergent Security Solutions  
 Starc Systems  
 Stevens Construction, Inc.  
 STRUCTURAL  
 STRUT Technologies Incorporated  
 Suffolk  
 Swisslog Healthcare  
 Tarkett  
 TAW Power Systems, Inc.  
 TECO Peoples Gas  
 Tecta America Roofing & Sheet Metal  
 TEKNOFLOR/SPARTAN SURFACES  
 The Garland Company  
 The Vertex Companies, Inc.  
 Trane  
 TRC Worldwide Engineering, Inc.  
 Tremco Roofing & Building  
 Maintenance

TriDim Filter Corporation  
 Turner Construction Company  
 United Electrical Sales / Legrand NA  
 United Fire Protection, Inc.  
 Universal Fuel Services  
 Unlimited Restoration, Inc.  
 USA Coil & Air  
 Viracon  
 Vonix  
 W+J Construction Corp.  
 Waco Filters/Sterilaire  
 Wal-Mark Contracting Group, LLC  
 Watson McDaniel  
 Wehr Constructors, Inc.  
 Western Specialty Contractors of America  
 William R. Nash Mechanical Contractors  
 Winn's Career Education  
 Yown's Boiler Service, Inc.

## President's Message (Continued)

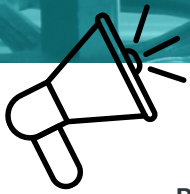
We will be at the Caribe Royale in Orlando and feature top-tier keynote speakers as well as expert presenters on topics that impact all in the healthcare engineering industry. Complete details can be found on the event page, [www.fhea.org](http://www.fhea.org) Plan to attend, register, and make your room reservations now! This event is one you will not want to miss.

In closing, thanks to our members and supporting members. Without you, the FHEA would not be the success it is today. A special thank you to our FHEA staff - these dedicated individuals are committed to helping our organization improve hospital engineering throughout Florida.

For more information or to submit comments and suggestions, please contact our FHEA Executive Director, Sarah Jeffcoat, at [sarah@fhea.org](mailto:sarah@fhea.org); Meeting Coordinator, Marty Streeper, at [info@fhea.org](mailto:info@fhea.org); or Communications Director, Susan Coone, at [susan@fhea.org](mailto:susan@fhea.org)

Happy Holidays to All,

Bobby Baird  
 FHEA President



## ADVOCACY ADVISER

### CONDUCTING AN FGI SAFETY RISK ASSESSMENT

By Mary Alcaraz, PE, LEED AP, Senior Facilities Project Manager  
Children's Hospital of Philadelphia

Whether health care facilities managers are contributing maintenance and operations feedback on new construction projects or managing the project themselves, a key component to a successful health care construction project is conducting a Facility Guidelines Institute (FGI) safety risk assessment (SRA).

When a project is required to follow FGI Guidelines, an SRA is to be conducted with the goal being the safe delivery of care. The FGI SRA components are comprised of seven key areas of risk: infection control; patient handling and movement; fall prevention; medication safety; behavioral and mental health; patient immobility; and security. If one of these categories is not applicable to a project, it may be skipped.

The facilities project manager typically leads the SRA process by scheduling the review meetings and is responsible for timing and filing. The architect and engineer of record work with a health care facility team leadership expert to complete the SRA. The goal is to align design with operations and mitigate harm to patients, staff, and families.

The SRA is most useful early in design and must be on file with the institution when undergoing regulatory design review. The Center for Health Design shares an evaluation scale that is helpful as a guide for team members to assess each risk category and develop design solutions to mitigate the risk.

The Center for Health Design also has an online toolkit that may be used for conducting studies and creating a standard template. The intent of the SRA is to prompt discussion and provide guidance in considering latent design vulnerabilities that may lead to harm. A template or tool is the most useful way to standardize the process for stakeholders participating in the reviews.

Per the FGI, a facility shall maintain the project FGI SRAs, and they may or may not be reviewed during inspections. Filing with the project database keeps it with the associated project. The SRAs are also helpful for participants new to the process or project type to use as an example on future projects.

**FHEA GOLF TOURNAMENT  
FALCON'S FIRE GOLF CLUB  
JUNE 1, 2022**

**GOLF FLYER**

**View Flyer for  
information,  
registration, and  
sponsorship**



**THE JOINT  
COMMISSION  
UPDATE**

**THE JOINT COMMISSION PUSHES VIOLENCE PREVENTION**

Effective Jan. 1, 2022, new and revised workplace violence prevention requirements will be applicable to all Joint Commission-accredited hospitals and critical access hospitals. The new and revised requirements provide a framework to guide hospitals and critical access hospitals in developing strong workplace violence prevention systems and address the following concepts: defining workplace violence, including a formal definition located in the glossary; leadership oversight; worksite analysis; developing policies and procedures for the prevention of workplace violence; and more.



**FHEA Annual Educational  
Program CEU Update**

**FHEA Educational Program on June 2-3, 2022 is approved for 10 ASHE CECs AND 9.0 hours of CE, through our CE provider, CEU Institute, for Florida Engineers. 5.0 hours have been approved for Interior Design: Engineered Infection Prevention, Rethinking Ventilation, and NFPA Standards, Sailing the Winds of Change, and Succession Planning.**

## FHEA STATE ENGINEER OF THE YEAR



### **John O'Connell, CHE, CHFM, CHSP, CHC**

John McConnell, CHE, CHFM, CHSP, CHC, has been selected as the FHEA Engineer of the Year. John is the Regional Director of Facility Management at Broward Health Coral Springs Hospital in Coral Springs, FL. He has held this position with Broward Health for 37 years and has been a member of the FHEA for seven years. Among his achievements in FHEA District IV, John has served as Secretary, Vice President, President, and Treasurer. At the State level, John has served as a member of the Board of Directors for two terms. Broward Health Coral Springs Hospital is a “not-for-profit” community hospital that hosts many community functions throughout the year. John, in his Facility Management role, is actively involved with these events.

## FHEA STATE SUPPORTING MEMBER OF THE YEAR

### **Tracey Gallentine**

Congratulations to Tracey Gallentine for her selection as FHEA Supporting Member of the Year. Tracey is the Business Development Manager for McKim & Creed, Inc. in Jacksonville, FL. She has served on the District II membership committee and led efforts to engage both Full and Supporting members this year. Tracey is always willing to go the extra mile to help in terms of communication and overall effort. She is also very inclusive and works to ensure clients and colleagues are fully heard which leads back to her excellent communication skills. Tracy gives 100% effort everyday and she has shown this same effort and pride in her work with FHEA District II helping to increase FHEA Full and Supporting membership numbers.

# DISTRICT ENGINEER AND SUPPORTING MEMBERS OF THE YEAR

Each year, candidates for consideration as the District Engineer of the Year are presented to each District President. A committee of three District members review the background and accomplishments of the healthcare engineer nominees submitted for recognition. The candidate, most suited to be the District's Engineer of the Year Award nominee, is then presented to the State Engineer of the Year Committee who selects the FHEA Engineer of the Year and honors this individual at the FHEA Annual Meeting. For a nominee to be considered as Engineer of the Year, he/she must be an active member of the FHEA and a CHE.

Congratulations to the following District Engineers of the Year:

**District I: Jackie Kennington, CHE, CHEPP**  
**Gulf Coast Regional Medical Center**  
**Panama City, FL**

**District III: Jordan Smith, CHC, CHFM, CHE**  
**AdventHealth Dade City/Zephyrhills**  
**Dade City, FL**

**District IV: John O'Connell, CHFM, CHE, CHC, CHSP**  
**Broward Health Coral Springs**  
**Coral Springs, FL**

Likewise, nominees to be considered for the Supporting Member of the Year are presented to the District's selection committee who reviews the background, participation, support, and accomplishments of the Supporting Member nominees. The candidate, most suited to be the District's Supporting Member of the Year award nominee, is then presented to the State committee who selects the FHEA Supporting Member of the Year. This individual is also honored at the FHEA Annual Meeting.

**This year's District Supporting Members are:**

**District I: Daniel Cone**  
**Assa Abloy**  
**Tallahassee, FL**

**District II: Tracey Gallentine**  
**McKim & Creed, Inc.**  
**Jacksonville, FL**

**District III: Taylor Benay**  
**National Firestopping Solutions**  
**Saco, ME**

**District IV: Arturo Covarrubias**  
**Sherwin Williams**  
**Ft. Lauderdale, FL**



## CONGRATULATIONS

# DISTRICT HIGHLIGHTS

## District III Holiday Party



## District IV Holiday Party



## District IV Holiday Party Sponsors

Signature Sponsor



Cocktail Sponsor



Dinner Sponsors



Bar Sponsors



DJ Sponsors

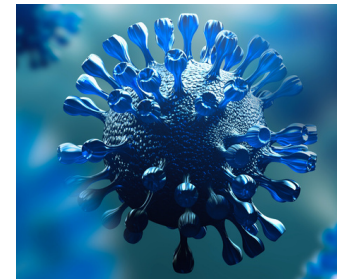


*Thank you!*



## PROVING INFECTIOUS DISEASE VENTILATION WITH AEROSOL TRACER DATA

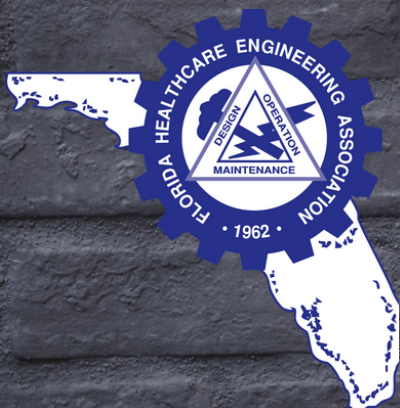
Michelle McIntyre, MPH, CIH, CSP, CHSP  
Director of Occupational Health and Safety, Universal Engineering Sciences



The CDC has recommended using multiple mitigation strategies to reduce the risk of exposures to SARS-CoV-2, including improvements to building ventilation. ASHRAE asserts that ventilation and filtration provided by HVAC systems 'can reduce the airborne concentration of SARS-CoV-2 and thus, the risk of transmission through the air.' There is new technology out that allows us to trace aerosols in an indoor environment, assess and evaluate HVAC systems to filter and dilute these aerosols, and provides for more informed decisions regarding HVAC system modifications and capital purchases for disinfection.

veriDARTTM from SafeTraces, a team of scientists, engineers, and safety practitioners, uses a safe seaweed DNA-coded aerosol tracer to mimic an infectious person's cough/sneeze to assess HVAC efficiency and determine indoor air quality risks. The process involves the use of FDA, OSHA, and NIOSH compliant, food-grade, water-soluble materials concentrated with DNA; a unique identifier is assigned to each tracer, which is sprayed in pre-determined areas of a building. Simultaneously, air pumps collect data on how far each tracer travels and in what concentration, as well as how quickly they dissipate from the air. Results are provided on color-coded maps, showing the log reductions across the indoor space, identifying hot spots or system deficiencies, or verifying the efficacy of recent upgrades or remediation activities.

In healthcare facilities, veriDART technology can assist with compliance of the new OSHA Emergency Temporary Standard for Healthcare (29 CFR 1910 Subpart U). For more information, contact Universal Engineering Sciences (UES), a Strategic Partner with SafeTraces.  
[www.universalengineering.com](http://www.universalengineering.com)

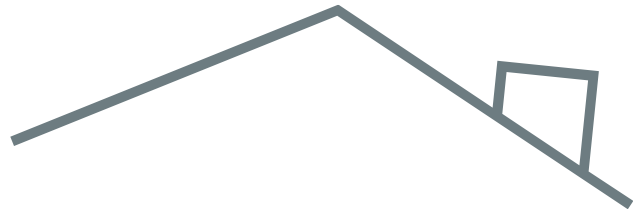


**FLORIDA HEALTHCARE  
ENGINEERING  
ASSOCIATION**

11812 N 56TH STREET, TAMPA, FL 33617  
813.988.FHEA ~ [www.fhea.org](http://www.fhea.org)

## ROOFING OPTIONS WHEN MATERIALS ARE NOT AVAILABLE

By Howard Piper  
PBA Design Group, Inc.



These are challenging times for those of us in the construction industry. If you work in the construction industry or are affected by delays in construction, you are keenly aware of the shortages of materials and the delays that are created. This is especially critical for our healthcare industry when completing new construction projects on time is not an option.

This article will provide some ideas to consider on options to discuss with your designer and contractor to avoid delays in your roofing projects. First, PBA Design Group, Inc. is an architectural firm and does not sell or endorse any products. Second, this article represents our opinion taken from our experience which may not be shared by others.

New construction is probably the most challenging since the project cannot be completed and the building occupied until there is a roof in place. If polyisocyanurate insulation is unavailable, consider lightweight concrete with EPS. If polyisocyanurate insulation and fasteners to anchor the base sheet are not available, consider the RT System from Siplast which allows torching the base ply to the lightweight concrete or applying Soprema's Sopraboard directly to the lightweight concrete with adhesive followed by torch applying the modified asphalt base ply.

You might also consider a temporary roof over a gypsum board which is made for roofing. The board can be adhered to the deck or mechanically attached and then a one- or two-ply roofing system installed. When insulation is available, the insulation can be adhered to the temporary roof and a new roofing system installed over the top.

These systems can also be considered for reroofing over the existing roofing system or over a newly installed temporary roof. Lightweight concrete can be sloped to provide positive drainage.

If a roof replacement is planned and materials are delayed, consider repairing the roof and coating the roof to extend the service life. There are many coatings to consider from silicone, aluminum roof coating, polyurethane, and others. Where the existing roof is a gravel surfaced roof, the options are a little more limited but most gravel surfaced roofs can be repaired and maintained for an extended period of time.

Regardless of your circumstances, a specialty roofing design professional or roofing contractor should be able to provide options to help complete your new construction project or to keep your building dry if your roof replacement is delayed.

For more information, please contact Howard Piper at PBA Design Group, Inc., 813-626-2540.

## Why Level E Products are Worth the Investment

By Frank Messa, CEO  
Enviralum Industries, Inc.

After the destruction of Hurricane Andrew in 1992, Miami developed protocols and stringent building codes for hurricane-rated glazing products. After seeing the devastation and loss of life that a hurricane can cause, it became imperative to ensure that building envelopes, especially doors and windows, were built stronger to hold up against impacts from flying debris, as well as water infiltration.

Since then, there have been more innovations and improvements to glazing, frames, and hardware of impact-resistant doors and windows. One of the most significant upgrades to the building codes for hurricane-rated glazing products is the requirement which designates Level E design for essential buildings such as hospitals, healthcare facilities, EMT call centers, fire and police stations, and even schools deemed storm shelters that must remain operable during emergencies, whether natural disasters or man-made.

“As awareness grows of the need for enhanced glazing impact protection (Level E) for essential facilities, so should the quality and product design for overall performance and sustainability,” says Ray Crawford, President, Crawford-Tracey Corporation, glazing contractor and commercial window manufacturer serving the Southeastern United States and Caribbean. “During and after a hurricane or major wind event, special teams and responders need to perform their services without interruption. Leaks, water damage, and eventually mold are some of the problems that threaten essential facilities with lower quality or poor performing glazing systems. Water resistance is equally as significant for Level E protection.”

Level E doors and windows are high performing, impact-resistant and fully functional before, during and after emergency events such as a hurricane. Oftentimes, these door systems are equipped with panic tools and alarms that allow time for security to arrive and prevent egress or forced entry

So, what dictates when and where Level E doors and windows are used?

1. Location — especially along coastal property where buildings can be impacted from flying debris and water infiltration.
2. Building use — any facility that requires a higher level of security as previously mentioned.
3. Product placement — not all entrances need high impact performance, but keep areas including entries to emergency rooms; maternity, dementia or psych wards; police and fire; schools are critical.
4. Product manufacturers — not all Level E products are equal. There can be a variance in quality and performance among manufacturers, so it is necessary for builders to do their homework.

High performance Level E door and windows systems are often more expensive to install, but well worth the extra expense. Frank Messa, President of Enviralum Industries, Inc., a manufacturer of high performance, impact-resistant entrance doors and storefront window systems whose products often exceed South Florida's stringent Florida Building Code High Velocity Hurricane Zone (HVHZ) requirements, explained why Level E products are costly.

Level E doors and windows provide twice the performance with thicker laminate, which makes the doors heavier to move; thus, increasing labor. They come unitized and shop glazed, meaning that they are ready to install right off the pallet and into the window opening. Being ordered from shop drawings means accuracy is key to installation success. This requires a lot of preplanning on the front end of the project. Contractors must provide guaranteed dimensions for the openings since there is no need for field verification or glazing. Also, a higher grade of hardware is necessary, especially for special requirements such as delayed entry.

So remember, when it comes to selecting Level E doors and windows for your high security project, do your homework as not all products are equal.

## WELCOME NEW SUPPORTING MEMBERS

**BRETT ALESHIRE**

*VICE PRESIDENT*  
 DEBONAIR MECHANICAL, INC.  
 MIAMI LAKES FL 305-826-2240  
 BALESHIRE@DEBONAIRAC.COM

**WILLIAM BICKFORD**

*VICE PRESIDENT*  
 CHILLMASTER  
 MURFREESBORO TN 615-895-8492  
 INFO@CHILLMASTER.NET

**JAMIE BUECHELE**

*ACCOUNT MANAGER*  
 GRAINGER HEALTHCARE  
 WINTER PARK FL 407-625-0550  
 JAMIE.BUECHELE@GRAINGER.COM

**EDGARDO CANALES**

*PROJECT MANAGER*  
 GHP, INC.  
 JUPITER FL 772-497-5591  
 ECANALES@GHP1.COM

**CHRIS CASSADY**

*FIRE & LIFE SAFETY AMERICA*  
 SANFORD FL 407-688-1949  
 CCASSADY@FLSAMERICA.COM

**MICHAEL CHAGAS**

*OWNER*  
 MPL CONSTRUCTION CORP  
 BOYNTON BEACH FL 561-305-2429  
 MICHAEL@MPLCORP.COM

**SCOTT CHASE**

*REGIONAL SALES DIRECTOR*  
 AQUIS SOLUTIONS  
 ORLANDO FL 407-574-5268  
 SCHASE@AQUISSOLUTIONS.COM

**MICHAEL CORNIER**

*PROJECT MANAGER*  
 TRI CITY ELECTRICAL CONTRACTORS, INC.  
 TAMPA FL  
 MICHAEL.CORNIER@TCELECTRIC.COM

**BILL CRAWFORD**

*BECS*  
 CLARKSVILLE MD 410-531-3200  
 BILL.CRAWFORD@BECSMD.COM

**DAVID SICSEK**

*COFFMAN ENGINEERS (CEI)*  
 TAMPA FL 301-323-3599  
 DAVID.SICSEK@COFFMAN.COM

**TRAVIS DEJOHN**

*SR. BRANCH MANAGER*  
 WESTERN SPECIALTY CONTRACTORS  
 WINTER PARK FL 407-647-4175  
 TRAVISD@WESTERNGROUP.COM

**NANCY FREEMAN**

*ENGINEERED LINING SYSTEMS*  
 JACKSONVILLE FL 904-759-3860  
 NFFREEMAN@ENGINEEREDLINING.COM

**HILLARY GORDON**

*REGIONAL SALES MANAGER*  
 PRIMEX  
 LAKE GENEVA WI  
 HGORDON@PRIMEXINC.COM

**ANTHONY GUTIERREZ**

*SENIOR DIRECTOR*  
 PURE PM  
 BRADENTON FL 813-767-0569  
 ANTHONY.GUTIERREZ@PUREPM.COM

**EVAN HELINSKI**

*SALES ENGINEER*  
 TRANE TECHNOLOGIES  
 PENSACOLA FL 251-285-9844  
 EVAN.HELINSKI@TRANETECHNOLOGIES.COM

**MARIAN JAKUBIK**

*OPERATIONS MANAGER*  
 BERGLUND CONSTRUCTION COMPANY  
 TAMPA FL 813-340-3419  
 MJAKUBIK@BERGLUNDSCO.COM

**KEITH JOHNSON**

*PUREFLOW INC*  
 LAKELAND FL 863-619-8500  
 KEITH.JOHNSON@PUREFLOWINC.COM

**JOANIE JONES**

*SERVICE MANAGER*  
 W.W. GAY MECHANICAL CONTRACTORS  
 ORLANDO FL  
 JJONES@WWGAYMC.COM

**JOSEPH KOKOLAKIS**

*PRESIDENT*  
 KOKOLAKIS CONTRACTING  
 TARPON SPRINGS FL 727-942-2211  
 JKOKOLAKIS@JKOKOLAKIS.COM

**SKYLAR MAYS**

*AREA MANAGER*  
 HOMEYER CONSULTING SERVICES, INC.  
 TEWKSBURY MA  
 SMAYS@HOMEYER.COM

**JAMES MCCALLUM**

*ACCOUNT EXECUTIVE*  
 JEA  
 JACKSONVILLE FL 904-665-6912  
 MCCAJE@JEA.COM

**SHAYLA MEADOWS**

*PUREFLOW INC*  
 LAKELAND FL 863-619-8500  
 SHAYLA.MEADOWS@PUREFLOWINC.COM

## WELCOME NEW SUPPORTING MEMBERS

**MIKE MICHALSKI**

*BUSINESS DEVELOPMENT MANAGER*  
HEPACART INC  
LENEXA KS 913-951-9388  
MMICHALSKI@HEPACART.COM

**ROBERT NASCA**

*BUSINESS DEVELOPMENT MANAGER*  
GHP  
NASHVILLE TN 629-241-6652  
RNASCA@GHP1.COM

**DANIEL NUNN**

*ACCOUNT MANAGER*  
TRANE TECHNOLOGIES  
PENSACOLA FL 580-266-4324  
SCOTT.NUNN@TRANE.COM

**JUSTIN PACK**

ATI RESTORATION  
TAMPA FL  
JUSTIN.PACK@ATIRESTORATION.COM

**BETH PARKER**

*VICE PRESIDENT*  
DYNA SCAN TECHNICAL SERVICES  
CINCINNATI OH 513-245-5951  
BETH74PARKER@GMAIL.COM

**ASHLEY POLICASTRI**

*BUSINESS DEVELOPMENT DIRECTOR*  
INTERSTRUCT  
TAMPA FL 954-857-7191  
APOLICASTRI@INTERSTRUCTINC.COM

**MIKE RIZZO**

*VICE PRESIDENT/ OPERATIONS MANAGER*  
W.W. GAY MECHANICAL CONTRACTORS  
ORLANDO FL 407-398-4029  
MRIZZO@WWGMC.COM

**JASON ROLFE**

*DIRECTOR OF SALES*  
FSI (FACILITIES SURVEY, LLC)  
PITTSBURGH PA  
JROLFE@FSISERVICES.COM

**ROD ROSENBERG**

*PRESIDENT & CEO*  
EVCOR SOLUTIONS INC.  
MIAMI FL 786-830-1200  
ROD@EVCORSOLUTIONS.COM

**AARON ROSENBLATT**

*PRINCIPAL*  
GORDON & ROSENBLATT, LLC  
NEW YORK NY 800-284-4566  
AR@GORDONROSENBLATT.COM

**JENNY SANCHEZ**

KOKOLAKIS CONTRACTING  
TARPON SPRINGS FL 727-942-2211  
JSANCHEZ@JKOKOLAKIS.COM

**TYLER SHEPPARD**

*SOUTHEAST SALES MANAGER*  
OPTEX AMERICA  
RANCHO DOMINGUEZ CA 800-966-7839  
TSHEPPARD@OPTEXAMERICA.COM

**TROY SHERIDAN**

*PRESIDENT*  
CPE LLC  
LAKE MARY FL 844-424-7925  
TROY@COMPLETEPARTITIONS.COM

**CAITLIN SHICK**

*BUSINESS DEVELOPMENT MANAGER*  
PINE LAKE NURSERY & LANDSCAPE, INC.  
LUTZ FL 813-807-0123  
CAITLIN@PINELAKENURSERYINC.COM

**STEVE SIBELMAN**

*SERVICE SALES REPRESENTATIVE*  
HARPER LLC  
BOYNTON BEACH FL 561-382-9445  
STEVEN.SIBELMAN@HARPERLIMBACH.COM

**MATT SKOGEN**

*HEALTHCARE REGIONAL SALES MANAGER*  
FIRE AND LIFE SAFETY AMERICA  
MASKOGEN02@GMAIL.COM

**ALBERT TAMAYO**

*BUSINESS DEVELOPMENT/SALES*  
GUARDIAN FUELING TECHNOLOGIES  
HIALEAH FL 786-556-9713  
ATAMAYO@GUARDIANFUELTECH.COM

**MELISSA TURNER**

*HEALTHCARE ACCOUNT MANAGER*  
W.W. GRAINGER  
GULF BREEZE FL 850-261-6288  
MELISSA.TURNER@GRAINGER.COM

**MATT VALENTINE**

*HEALTHCARE PROJECT EXECUTIVE*  
HOAR CONSTRUCTION LLC  
ORLANDO FL 407-650-8100  
MVALENTINE@HOAR.COM

**MATT WHITAKER**

*TECHNICAL SALES ENGINEER*  
BOILER TECHNOLOGIES UNLIMITED  
LITHIA FL  
MATT@BOILERTECHNOLOGIES.COM

**WALTER ZOLNOWSKI**

*FIELD OPERATIONS TRAINER*  
FIRE & LIFE SAFETY AMERICA  
SANFORD FL 689-208-8532  
WGZOLNOWSKI@FLSAMERICA.COM

# THE WHISTLE

FLORIDA HEALTHCARE ENGINEERING ASSOCIATION



## 2022 FHEA BOARD OF DIRECTORS

### PRESIDENT

Lamar Bragg, CHFM  
Baptist Healthcare

### VICE PRESIDENT

Adam Mayle, CHFM, CHE,  
CHC  
Memorial Regional Hospital

### SECRETARY

Tim Moreira, CHFM, CHSP,  
CHC, CHE  
AdventHealth North Pinellas

### TREASURER

Russ Schilling, CHE

### PAST PRESIDENT

Bobby Baird, SASHE, CHFM,  
CHSP, CHE  
UF Health - Shands

### FHEA EXECUTIVE DIRECTOR

Sarah Jeffcoat

### FHEA MEETING COORDINATOR

Marty Streeper

### DISTRICT I

#### PRESIDENT

Kevin Daniel, CHE, CHFM  
Jackson Hospital

### DISTRICT II

#### PRESIDENT

Dan Glenn, CHE, CHFM  
UF Health - Jax

### DISTRICT III

#### PRESIDENT

Jordan Smith  
AdventHealth

### DISTRICT IV

#### PRESIDENT

William Westbay, CHFM  
Holy Cross

### REPRESENTATIVE

Derrick Nail  
Santa Rosa Medical Center

### REPRESENTATIVE

Paul Hamilton  
Moosehaven

### REPRESENTATIVE

Kirk Dickson, CHFM, CHC  
Neumours Children's Hospital

### REPRESENTATIVE

Scott Payne  
Baptist Healthcare

## FHEA COMMITTEES

### Education

John Crouch  
AdventHealth Wesley Chapel

### Bylaws

Kevin Daniel, CHE, CHFM  
Jackson Hospital

### ASHE Region 4 Liasion

Larry Peterson, CHE, CHFM, CHSP

### Codes & Standards

John Hatfield, CHE, CHEP  
Encompass Health Rehab

### Membership Development

Felix Robinson, CHFM, CPMM

### ASHE Sustainability Liasion

Edgard Niebles, MBA, CHC  
Memorial Regional Hospital

Florida Healthcare Engineering Association

11812 N. 56th Street, Tampa, FL 33617

813.988.FHEA [www.fhea.org](http://www.fhea.org)