



Q1 ASHE Chapter Leaders, Sustainability and Advocacy Liaison Meeting

9 March 2022

© 2022 American Society for Health Care Engineering,
a professional membership group of the American Hospital Association
155 N. Wacker Drive, Suite 400 | Chicago, IL 60606
ashe.org | ashe@aha.org | 312-422-3800



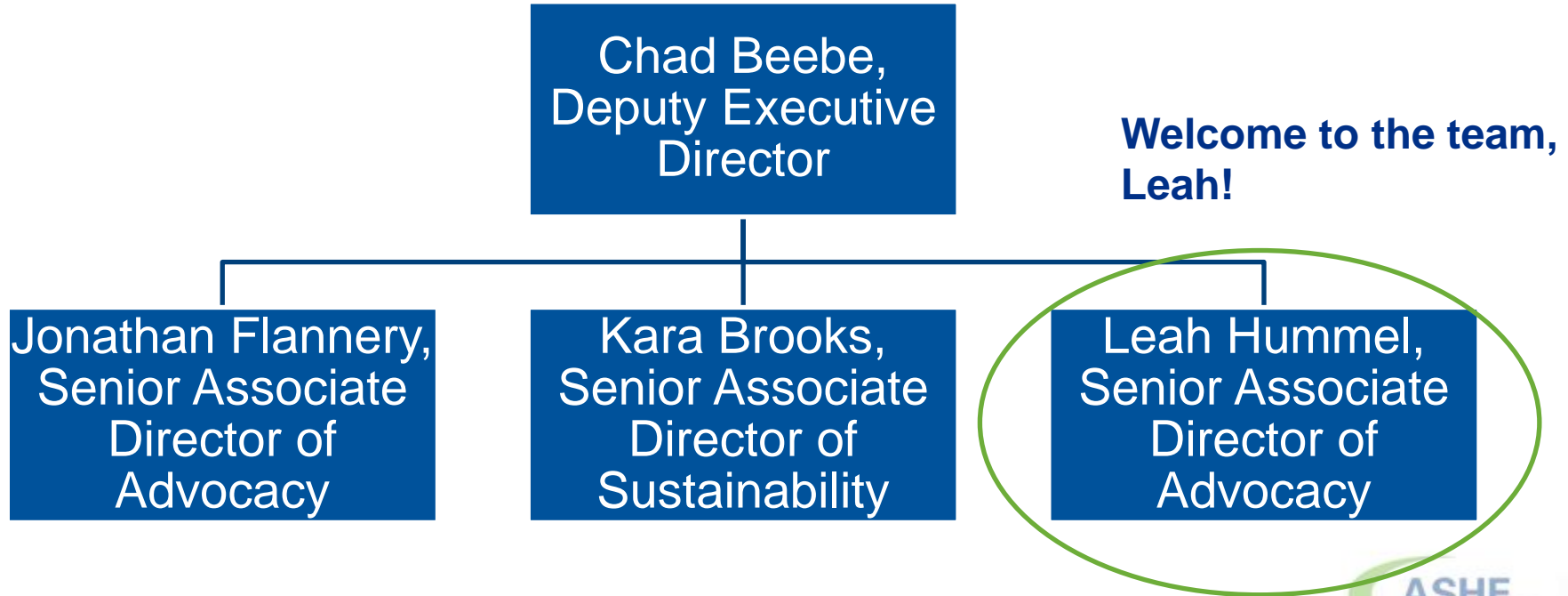
Agenda

1. 2022 Chapter Awards Application
2. NFPA Update
3. Environmental Sustainability and Decarbonization
4. ASHRAE Update
5. Sustainability Education Development
6. 2022 Chapter Leadership Forum - poll
7. Energy to Care Awards and Chapter Challenge
8. ICC Update
9. 2021 Vouchers
10. Project Firstline
11. 2022 Webinar Dates
12. Upcoming Events

Liaison Slide Deck

This slide deck will be shared in the myASHE Liaison Community and SharePoint. The slide deck is intended to be used by the liaisons to assist in sharing information with chapters. The slide deck is not to be shared with others. By downloading the presentation slides, you agree to use it for sharing information purposes only.

ASHE Advocacy Team is Growing



2022 Chapter Awards Application

2022 Chapter Applications

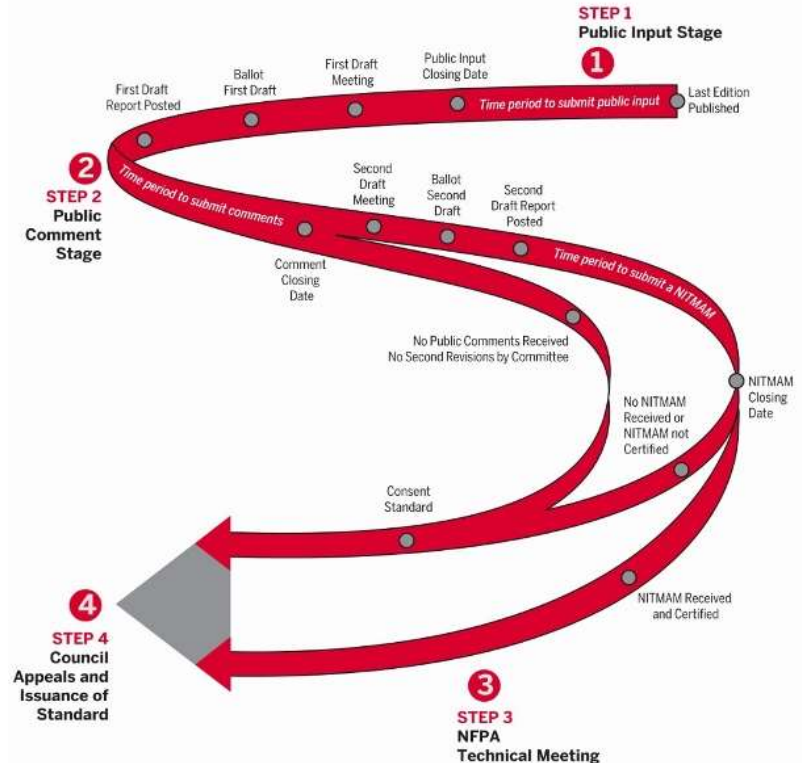
- Applications are due on April 1, 2022
 - ✓ Upload Documents in SharePoint
- Education Opportunities
 - ✓ Points
- Participation In Awards Program
 - ✓ Chapter Benefits

NFPA Update

NFPA Process

- 3 Year Cycle
- Input Stage - First Draft
 - Public Input
 - First Draft Report
- Comment Stage - Second Draft
 - Public Input
 - Second Draft Report
- Motions Committee (NITMAM)
 - Public Input
 - NITMAM Report
- NFPA Technical Meeting
 - Membership Vote

The Standards Development Process



NFPA Standards

- 2021 Editions Available
- 2022 Editions
 - NFPA 25
 - Second Draft Report Posted 24 January 2022
 - NITMAM Closed 22 February 2022 – will post on 2 May 2022
 - ASHE coordinated 2 NITMAMs
 - Section 5.2.2.2 Only – Accept Committee Comment 3
 - Section 5.2.2.2 and 5.2.2.2.1 – Accept Committee Comment 3

5.2.2.2

Sprinkler piping shall not be ~~subjected to external loads by materials either resting on the pipe or hung from the pipe~~ used to support nonsystem components.

5.2.2.2.1

Nonmetallic sprinkler pipe shall not be subjected to incompatible components or materials in contact with the pipe.

NFPA Standards

- 2022 Editions
 - NFPA 70
 - Second Draft Report Posting 21 March 2022
 - NITMAM Closing 11 April 2022
 - NITMAM Posting 2 May 2022
- **Technical Session 8 June 2022 1:00 PM – 9 June, Boston, MA**

NFPA Standards

- 2023 Editions
 - NFPA 90A/90B
 - First Draft Report Posted 10 Feb 2022 – **NOW AVAILABLE!!!**
 - Public Comment Closing 31 May 2022
 - Second Draft Report 28 February 2023
 - NITMAM Closing 28 March 2023
 - NFPA 70E, 99 & 101
 - First Draft Report Posted 1 March 2022 – **NOW AVAILABLE!!!**
 - Public Comment Closing 31 May 2022
 - Second Draft Report 28 February 2023
 - NITMAM Closing 28 March 2023

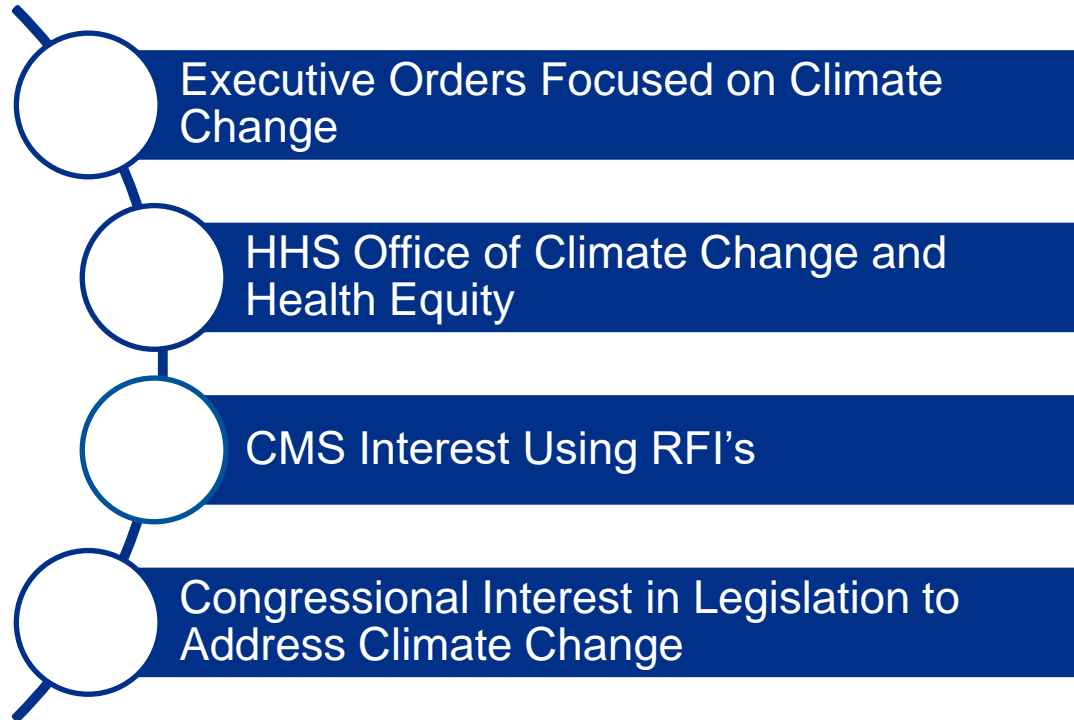
NFPA Standards

- 2024 Editions
 - NFPA 13, 72, 80, 101A, 105, 110 & 111
 - Public Input Closing 1 June 2022
 - First Draft Report Posting 22 March 2023
- If you have questions/concerns with language submit RFI to HITF
 - <https://www.nfpa.org/Codes-and-Standards/Standards-development-process/Technical-Committees/Advisory-and-Non-NFPA-Committees/Healthcare-Interpretations-Task-Force#INTERPRETATIONS>

Environmental Sustainability and Decarbonization

Federal Efforts

- Biden Administration and Congress Seek Action on Decarbonization



National Academy of Medicine

Decarbonizing the U. S. Health Care Sector

- Formation of an Action Collaborative Aimed at Decarbonizing the U.S. Health Care Sector
 - Steering Committee*
 - Infrastructure and Supply Chain
 - Health Care Delivery*
 - Health Professional Education and Communication
 - Policy, Financing and Metrics*
- Potential Key Issues
 - Reimbursement
 - New Standards and Requirements for Hospitals
 - Capital Expenses
 - Board and Leadership Engagement
 - Cross-Sector Partnerships



State and Local Jurisdiction Efforts



- Local bans and electrification codes for new buildings
- State bans on natural gas hookups
- State and local energy targets
- State and local carbon reduction targets
- State bans on local natural gas bans

AHA's Work on Decarbonization

ASHE and PMG's

- Energy to Care

Toolkits

- CEOs
- Boards
- CFOs

Advocacy

- Remove barriers to action

ASHE's View

Decarbonizing the U.S. health care footprint is an important and necessary step to mitigating the effects of climate change. ASHE supports the decarbonization of health care and is dedicated to leading the field by providing tools and resources to both reduce the health care carbon footprint and to inform public policy. ASHE intends to advance thoughtful approaches to climate change that take into consideration the unique regulatory environment within which hospitals and health systems operate. ASHE is dedicated to help health care organizations to become more sustainable by adopting environmental, social, and fiduciary practices that support healthy, equitable, and resilient environments and communities.

ASHRAE Update

ASHRAE/ASHE 170

- ASHRAE/ASHE 170 Ventilation for HC Facilities
 - 2021 Edition Available via ASHE or ASHRAE
- No current addenda posted for public review
- Currently working on the following topics
 - OR Air
 - Reviewing proposal for OR's as clean rooms
 - Exhaust Discharge
 - CMP Rejected due to addressing emergency conditions not design
 - AIIR Alternate Ventilation Methodologies
 - Recirculation of HEPA filtered AIIR air – rejected based on the issue that AIIR air is not “clean” air even if HEPA filtered
 - Additional air volume to replace HEPA requirement – CMP rejected to the number of variables that could impact the methodology

- Guideline 43 - Operations Guideline for Ventilation of Health Care Facilities
 - PURPOSE: The purpose of this guideline is to provide information and guidance for the operation of ventilation systems that provide environmental control in new and existing health care facilities.
- Continuing to work on this guideline
 - TPS changes submitted for approval
 - Once approved will go out for public review
 - Developing outline

ASHRAE 90.1

- Public Review Comments due by 20 March
- ASHRAE 90.1 Addendum ch – informative appendix to support jurisdictions and beyond code programs that choose to use Appendix G compliance metrics other than energy cost.

ASHRAE 240P

- Evaluating Greenhouse Gas (GHG) and Carbon Emissions in Building Design, Construction and Operation
 - Establishes how to measure and verify the GHG and carbon emissions of a building or group of buildings over the entire life-cycle
- TPS Public Review Comments due by 27 March

ASHRAE 514

- Risk Management for Building Water Systems: Physical, Chemical, and Microbial Hazards
 - The purpose of this standard is to establish minimum requirements to reduce illness and injury from physical, chemical, and microbial hazards from water systems in buildings.
 - To be issued for full public review later this Spring/Summer

ASHRAE Public Review

- Watch for notices within



CODES & STANDARDS

Health care ventilation standard open for public comment

A proposed addendum to Standard 170-2017, Ventilation of Health Care Facilities, is open for public comment.

HFM

Sustainability Education Development

NEW! Sustainability Education Development



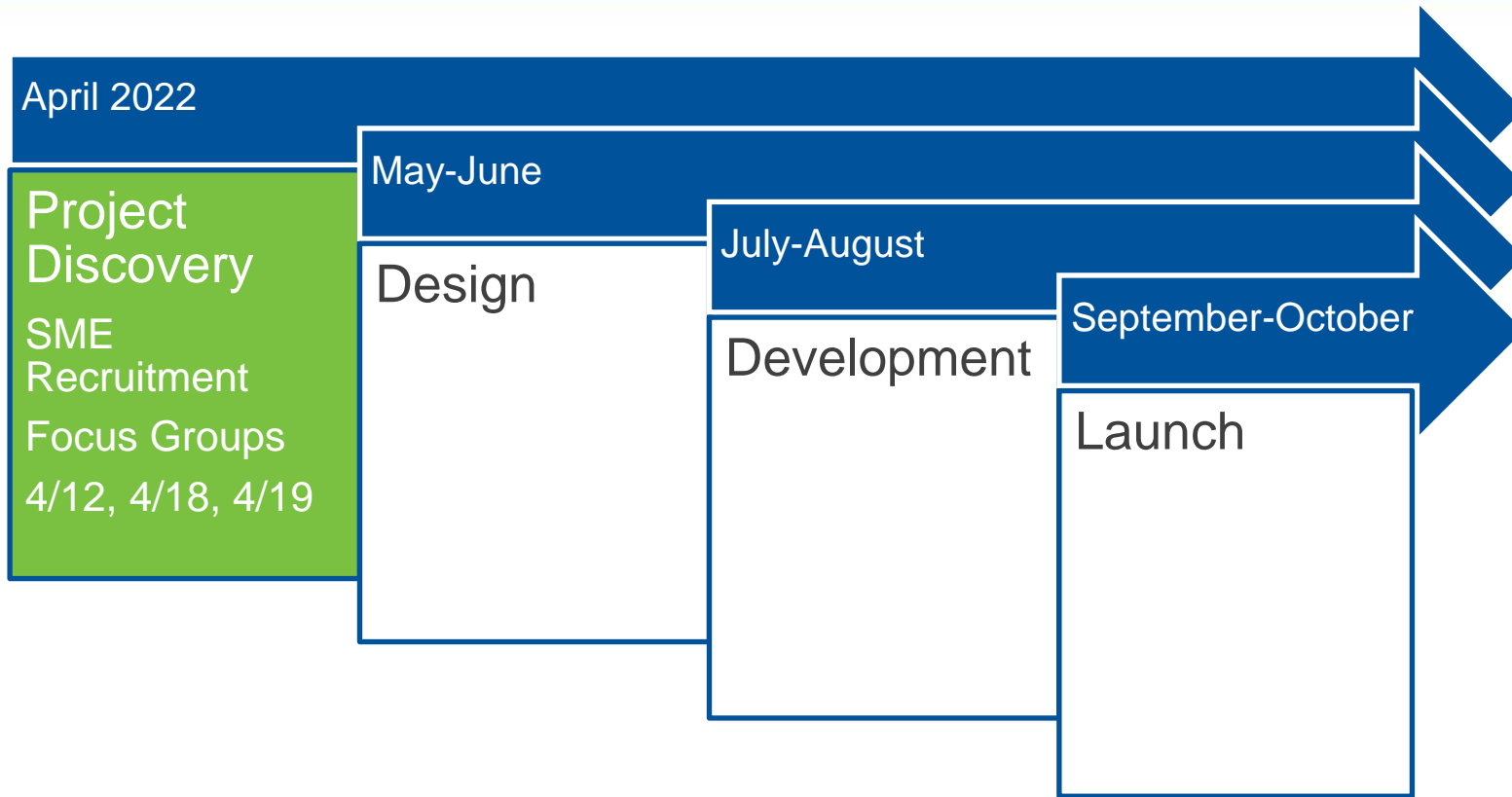
Why? New imperatives to make progress in this area.

Who? New/ novice learners to build foundation skills.

What? New e-Learning modules to build momentum around sustainability and decarbonization efforts.

How? Working with SMEs to develop authentic, engaging learning experiences.

NEW! Sustainability Education Development



2022 Chapter Leadership Forum Poll

2022 Chapter Leadership Forum Poll

- Raise your hand if you enjoyed having entertainment at the 2021 Virtual Chapter Leadership Forum

- Raise your hand if you would like entertainment at the 2022 in-person event

2022 Chapter Leadership Forum Poll

- Raise your hand if you plan to attend the 2022 Chapter Leadership Forum

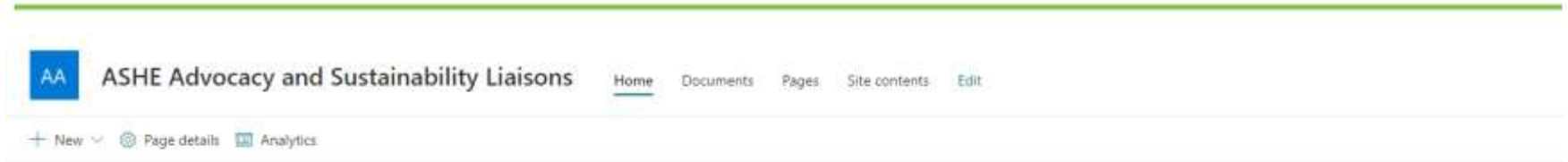
2022 Chapter Leadership Forum Poll

- Raise your hand if you find the Roundtables beneficial at the Chapter Leadership Forum

- What topics do you want presented at the 2022 Chapter Leadership Forum?
 - Enter these topics into the Teams Chat.

Energy to Care Awards and Chapter Challenge

Where do I find information?



ASHE Advocacy



Greater efficiency supports patient care.

ASHE Sustainability

Welcome to ASHE's New Advocacy and Sustainability Sharepoint site! Bookmark the page, and return for liaison news and events, meeting information, webinar recordings, and document sharing.

ASHE Advocacy and Sustainability Liaisons *sharepoint site*
energytocare.org

Energy to Care Awards



Energy to Care Award

ASHE's Gold Standard Awards for Health Care Facility Energy Savings

The Energy to Care Award celebrates facilities accomplishing sustainability goals that will pave the way for environmental stewardship, social equity and fiduciary responsibility in their health care organizations to support healthy, equitable and resilient environments and communities maintained over time.

In its inaugural year (2006), ASHE awarded 9 facilities with this prestigious award. These awards have grown to over 250 recipients in 2020!

Criteria to win this award include:

- Facility **MUST** be tracking energy and water consumption, as well as Greenhouse Gas emissions in the Energy to Care Dashboard. Signature verification of data accuracy is required.
- NOTE: 10% of award winners' data will be randomly chosen and verified for each award cycle.
- Reduction 10% weather normalized source EUI savings in a single year (comparing 2021 to 2019 baseline).
- OR reduction weather normalized source EUI 15% savings over two years (comparing 2021 and 2018).
- OR reduction weather normalized source EUI 5% savings in a single year **PLUS** previous winner (comparing 2021 to 2019).

How to WIN and be RECOGNIZED?

- Track energy, water and greenhouse gas emissions in the Energy to Care Dashboard.
- To learn more and begin tracking, [click here!](#)
- Energy to Care Award eligibility is visible in the dashboard through the "Awards Progress" widget!

Sustainability Champion – APPLICATIONS DUE April 1!

Sustainability Champion Award

ASHE's Gold Standard Awards for Health Care Facility Energy Savings

The Energy to Care Sustainability Champion recognizes facilities who demonstrate leadership in health care sustainability. Multiple facilities are eligible to win this distinguished award on an annual basis. Applications will be available on the Energy to Care website no later than February 1, 2022.

Criteria to win this award include:

- Track energy, water and greenhouse gas emissions in the Energy to Care Dashboard.
- To learn more and begin tracking, [click here](#).
- Facilities are required to provide Professional Engineer (PE) verification.
- Facility must have an ENERGY STAR score 75 or above.
- Facility must be an ENERGY STAR Certified Hospital (must have been certified in 2017, 2018, 2019, 2020, or 2021).
- Facility or system must have a published Sustainability Statement.
- Facility or system must have a designated Sustainability Champion on staff or sustainability lead on staff.
- Facility must have a designated Green Team.

How to WIN and be RECOGNIZED?

- The Energy to Care Sustainability Champion Award is application only process.
- Applications will be available on the Energy to Care website no later than February 1, 2022.
- Winners will be notified no later than May 15, 2022.
- Winners will be recognized at the 2022 ASHE Annual Conference, July 17 – 20, 2022 in Boston, MA.
- Awards, award logos, letter of recognition, and information on purchasing award logo wear will be sent to facilities teams and the senior leader by September 1, 2022.
- Sustainability Champions will be recognized on the Energy to Care website and in ASHE publications. Champions must agree to submit photos of the facility and access to team members to be interviewed for publications.



Sustained Performance – APPLICATIONS DUE April 1!

Sustained Performance Award

ASHE's Gold Standard Awards for Health Care Facility Energy Savings



The Energy to Care Sustained Performance Award celebrates facilities accomplishing sustainability goals in their health care organizations to support healthy, equitable and resilient environments and communities maintained over time.

Criteria to win this award include:

- Facility MUST be tracking energy and water consumption, as well as greenhouse gas emissions in the Energy to Care Dashboard. Signature verification of data accuracy is required.
- ASHE will verify award winners' data for each award cycle.
- Facility must have an ENERGY STAR Score of 75 or above OR weather normalized SOURCE EUI equal to baseline (2018) or lower for 3 or more years (2018, 2019, 2021).

How to WIN and be RECOGNIZED?

- The Energy to Care Sustained Performance Award is an application only process.
- Applications will be available on the Energy to Care website no later than February 1, 2022.
- Winners will be notified no later than May 15, 2022.
- Winners will be recognized at the 2022 ASHE Annual Conference, July 17 – 20, 2022 in Boston, MA.
- Awards, award logos, letter of recognition, and information on purchasing award logo wear will be sent to facilities teams and the senior leader by September 1, 2022.

Chapter Challenge – COMMITMENT FORMS due May 1!

- *Sign-ups are available until May 1, 2022.* ***www.energytocare.org***
- To complete your 2023 Challenge application, please submit the following two steps:
 - Complete your Chapter Challenge Commitment:
 - Complete the Excel spreadsheet form for submitting participating facilities.
 - Excel spreadsheet template can be found and downloaded from the ***[Liaison SharePoint Site](#)***
 - Team spreadsheets **MUST** be submitted through the Chapter Challenge Commitment Form.
 - Complete the **[2023 ENERGY TO CARE CHAPTER CHALLENGE COMMITMENT FORM](#)**

ICC Update

ICC

- 2024 ICC Code Development Cycle
 - Code Action Committee Hearings Group B
 - Sunday 27 March – Wednesday 6 April
 - Administrative Sections
 - IEBC
 - IRC
 - IEBC - S
 - IBC - S

ICC CHC

- CHC Submitted 8 Proposals
 - EB32 Provides exception for CO detectors in sleeping rooms if:
 - CO source has detection
 - Alarm is transmitted to approved location
 - EB56 - Clarify what is required for Group I-1, Condition 2 additions
 - EB71 - Define Ambulatory Care Facility in the IEBC
 - EB72 - Specifies where an existing Group I-1 would need to subdivide into smoke compartments

- CHC Submitted 8 Proposals Continued
 - EB73 - Address ambulatory care facilities in building where a substantial renovation is occurring
 - EB95 - Clarify what is required where an existing Group I-1 has partial change of use
 - EB98 - Allow higher guards for patient safety around outdoor patient garden/exercise areas on a roof
 - EB116 - Appendix for temporary use of existing buildings during an emergency

- CHC to Oppose several other proposals
 - G2 – Defines Life Safety Components - Components of life safety systems, designated seismic systems, emergency power systems, and emergency and egress lighting systems. This definition of life safety components is limited in application to the provisions of Section 1604.5.
 - S9 – Relocates Section 1404.17 Fastening to Section 1404.5 – CHC prefers S62 which updates IBC with the provisions of the 2022 edition of *ASCE/SEI 7 Minimum Design Loads and Associated Criteria for Buildings and Other Structures*

- CHC to Oppose several other proposals
 - S74 – S78 - Updates Table 1604.5 Risk Category of Buildings and Other Structures
 - Adds language “and buildings where loss of function represents a substantial hazard to occupants” to Risk Category IV facilities
 - Relocates
 - Group I-1 occupancies in which at least half of the Group I-1 care recipients qualify as Group I-1, Condition 2 to RC IV
 - All Group I-2 occupancies to RC IV
 - CHC still reviewing 12 – 15 additional proposals
 - Windborne Debris, Reconditioned Elec Equip, IRC Scope

2021 Vouchers

2021 Vouchers

- CHFM/CHC, Publications, Membership
Available via Email
Available in SharePoint File
Week of March 14, 2022

Deadline to Redeem – May 1, 2022

- Annual Conference Vouchers Availability

Project Firstline

Project Firstline – CDC National Training Collaboration



CLINICAL STAFF
Resources on infection prevention and ventilation for clinical staff.

[Access >](#)



FACILITIES MANAGERS
Resources on ventilation and negative pressure rooms for health care facilities managers.

[Access >](#)



CONTRACTORS/TECHNICIANS
Resources on ventilation and negative pressure rooms for outside contractors and technicians.

[Access >](#)



ASHE AHA
1.02K subscribers

SUBSCRIBED

VIDEOS COVER A WIDE RANGE OF VENTILATION TOPICS FOR CLINICIANS

Watch on YouTube

2022 Webinar Dates

2022 Sustainability and Advocacy Liaison Dates

2022 Webinar Dates

Q2: Wednesday, June 1, 2022

Q3: Wednesday, September 14, 2022

Q4: Wednesday, December 7, 2022

All webinars begin at 12:00 noon CST.

*Webinar reminders - myASHE Liaison Community
and Liaison SharePoint site*

Events!

Energy to Care Newsletter!



April 22, 2022

Welcome to the first issue of the Energy to Care Quarterly Newsletter. We hope it inspires you to reduce energy consumption, providing value to your organization and improving patient care.



Better ClimateTM CHALLENGE

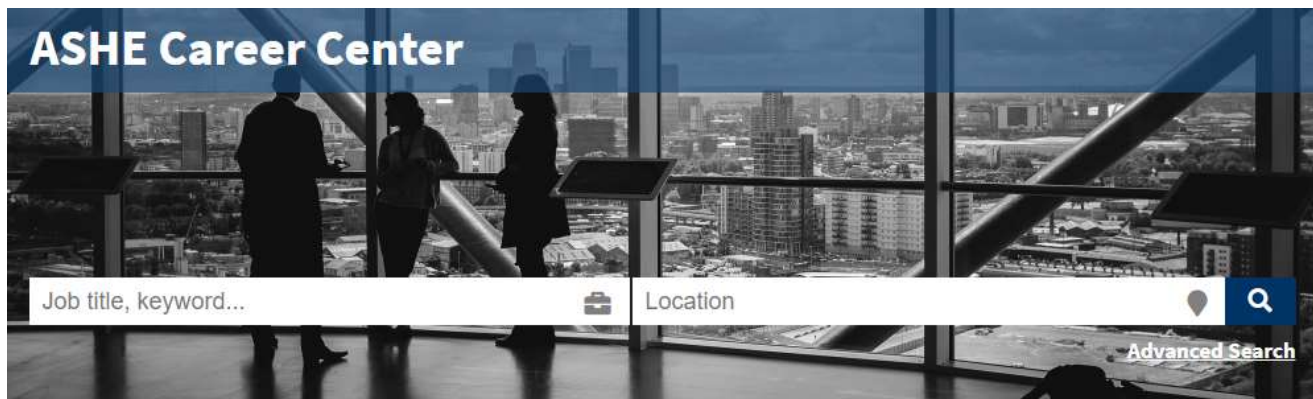
U.S. DEPARTMENT OF ENERGY

A L L Y

Upcoming Events!



ASHE Career Center



Current ASHE Openings!

***Senior Specialist, Sustainability
Executive Director, ASHE and ASHRM***

Questions or Discussion?





Thank you!

© 2022 American Society for Health Care Engineering,
a professional membership group of the American Hospital Association
155 N. Wacker Drive, Suite 400 | Chicago, IL 60606
ashe.org | ashe@aha.org | 312-422-3800

