



*Optimizing health care facilities*

# Q3 ASHE Advocacy and Sustainability Liaison Training

1 October 2021

© 2021 American Society for Health Care Engineering,  
a professional membership group of the American Hospital Association  
155 N. Wacker Drive, Suite 400 | Chicago, IL 60606  
ashe.org | ashe@aha.org | 312-422-3800





Jonathan Flannery, MHSA, CHFM, FASHE,  
FACHE

Senior Director of Advocacy, ASHE

[jflannery@aha.org](mailto:jflannery@aha.org)

Cell: 501-813-2400



Kara Brooks, MS, LEED AP BD+C  
Sustainability Program Manager, ASHE

[kbrooks@aha.org](mailto:kbrooks@aha.org)

Office: 312-422-3813

# Agenda

---

1. 9:00-9:30 Welcome and introductions
2. 9:30-9:45 Advocacy and Sustainability Sharepoint Site and 2022 Meeting Dates
3. 9:45-11:30 Sustainability
4. 11:30-12:30 Break for Lunch
5. 12:30-1:00 NFPA Update
6. 1:00-1:30 Overview of ASHE Member Tools Task Force (MTTF)
7. 1:30-3:00 Final Prioritization of Topics
8. 3:00-3:30 Getting More Involved with ASHE Advocacy
9. 3:30-4:30 Review Top 30 for assignments, schedule and tools

# Liaison Slide Deck

---

This slide deck will be shared on the Liaison Sharepoint Site. The slide deck is intended to be used by the liaisons only to assist in sharing information with chapters. The slide deck is not to be shared with others. By downloading the presentation slides, you agree to use it for sharing information purposes only.

# Welcome from the 2021 ASHE Past President

---



**Jeff Henne**, FASHE, CHSP-FSM, CHEP, CHC  
Safety and Emergency Manager  
University of Pennsylvania Health System



# Welcome

---

- Invitees
  - Sustainability Liaisons
  - Advocacy Liaisons
  - Justice League
  - Member Tool Task Force
  - Regulatory Affairs Committee
- Purpose
  - Sustainability Liaisons
  - Advocacy Liaisons
  - MTTF

Advocacy and  
Sustainability  
Liaison  
Sharepoint

# 2022 Meeting Dates

# 2022 Sustainability and Advocacy Liaison Dates

---

***2021 Q4: Wednesday, Dec 8, 2021, 12:00 noon CST***

## **2022 Webinar Schedule**

Q1: Wednesday, March 9, 2022

Q2: Wednesday, June 8, 2022

Q3: Wednesday, September 14, 2022

Q4: Wednesday, December 14, 2023

*All webinars begin at 12:00 noon CST.*

*Webinar reminders - myASHE Sustainability Liaison  
Community and on the Liaison Sharepoint Site*

# Sustainability in Health Care

# Agenda

---

1. Sustainability in Health Care
2. ASHE's Tools and Resources
3. What's New?
4. Sustainability Job Description
5. Chapter Challenge
6. Volunteers Needed
7. Project Firstline
8. Upcoming Events

# Definition of Sustainability

---

## What is Sustainability in health care?

*Sustainability in health care refers to the integration of environmental stewardship, social equity and fiduciary responsibility in health care organizations to support healthy, equitable and resilient environments and communities maintained over time.*



# Why Health Care Leaders Embrace Sustainability



# Current Events Affecting Health Care

---

Impending costly regulations



Aging infrastructure



Hospitals susceptible to climate events



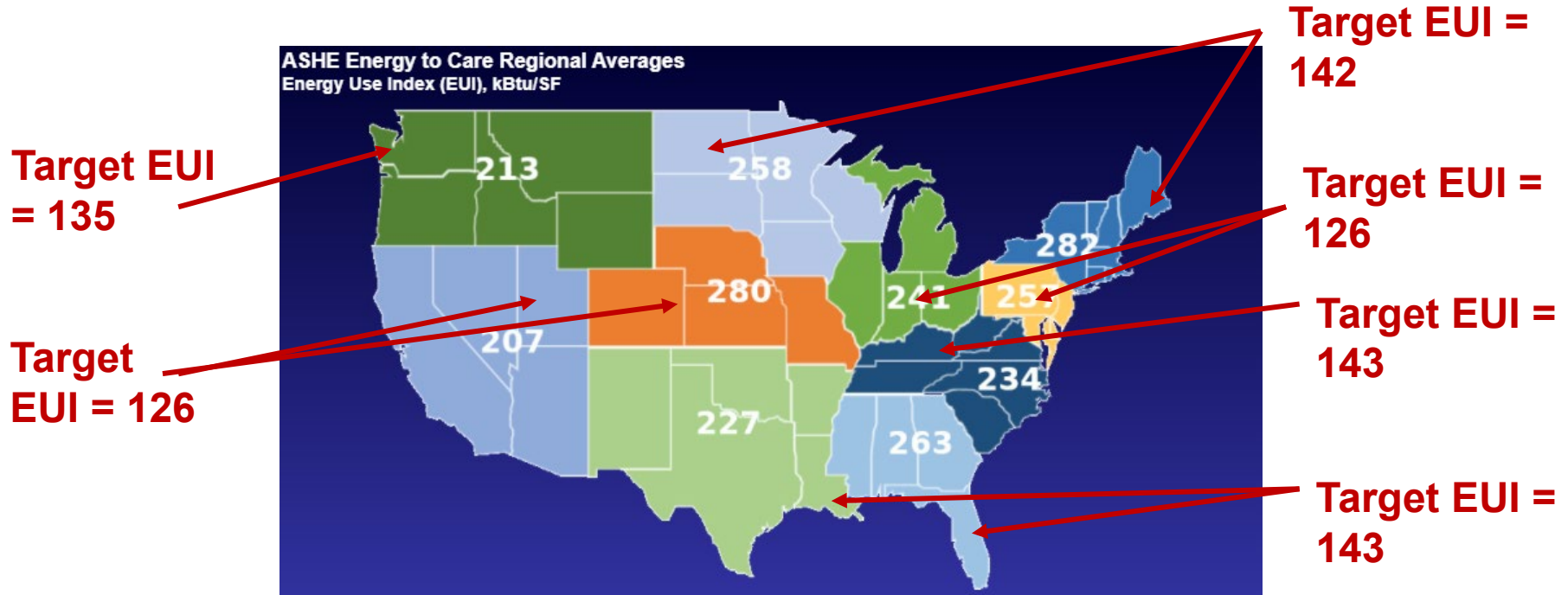
Vulnerable power and fuel systems



Movement toward **decarbonization**



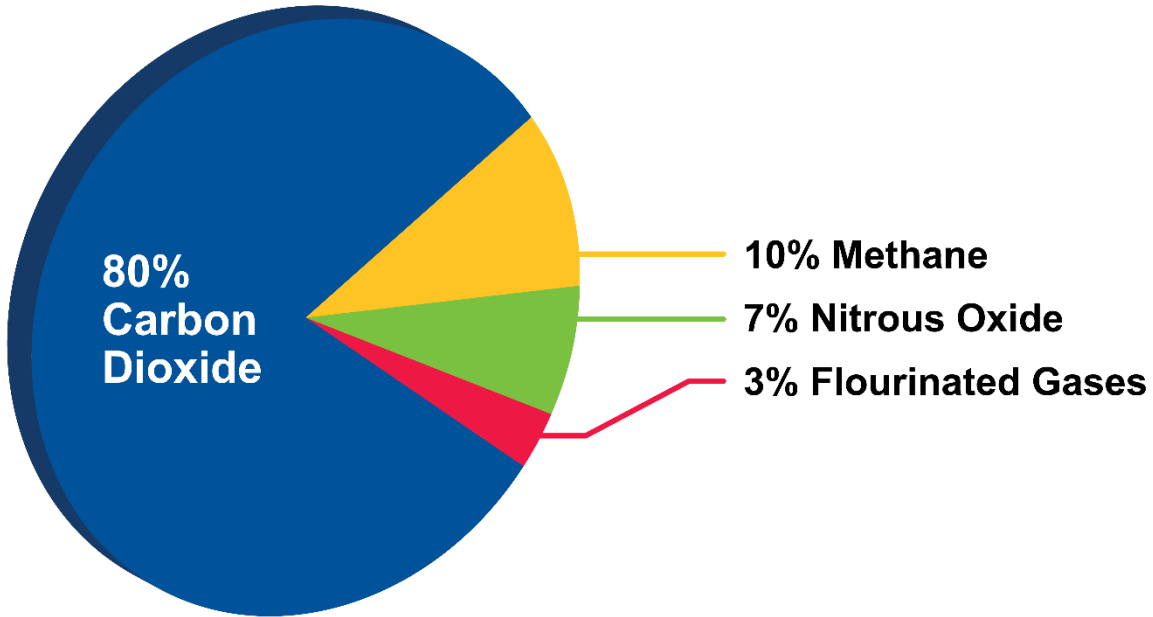
# Operational Site EUI vs Target Site EUI



# What are Greenhouse Gas Emissions?

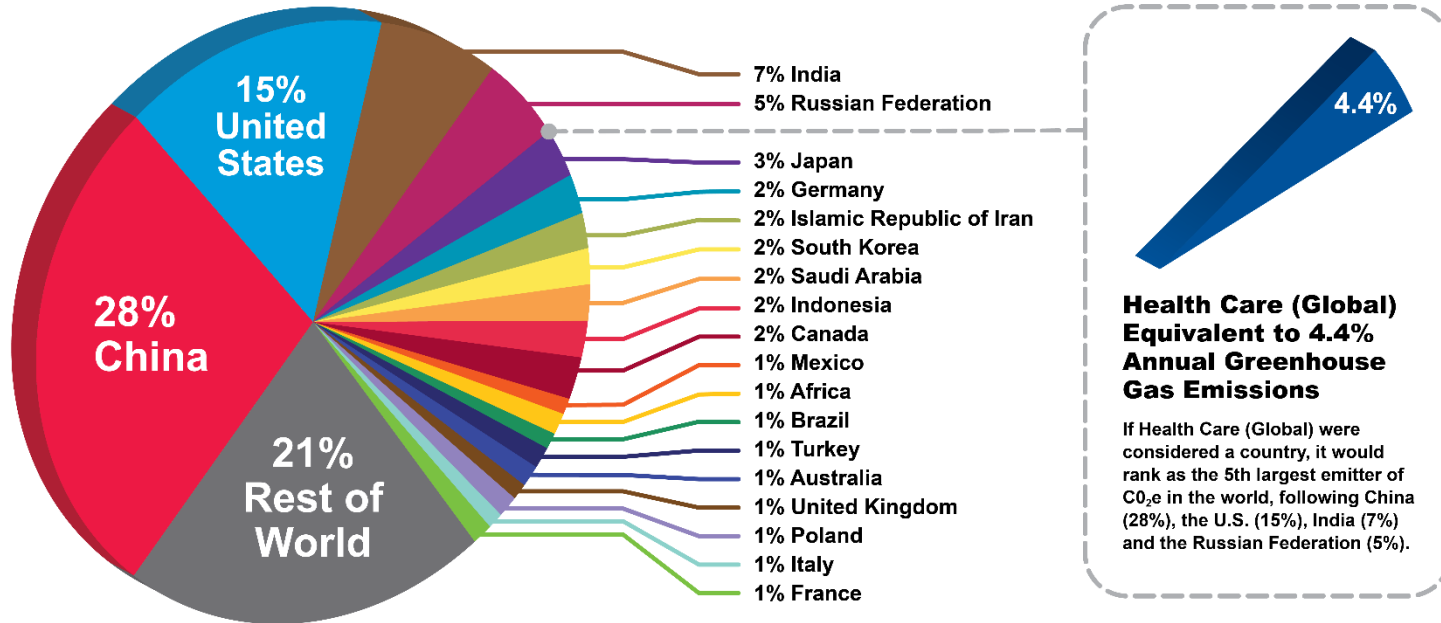
---

## U.S. Greenhouse Gas Emissions in 2019

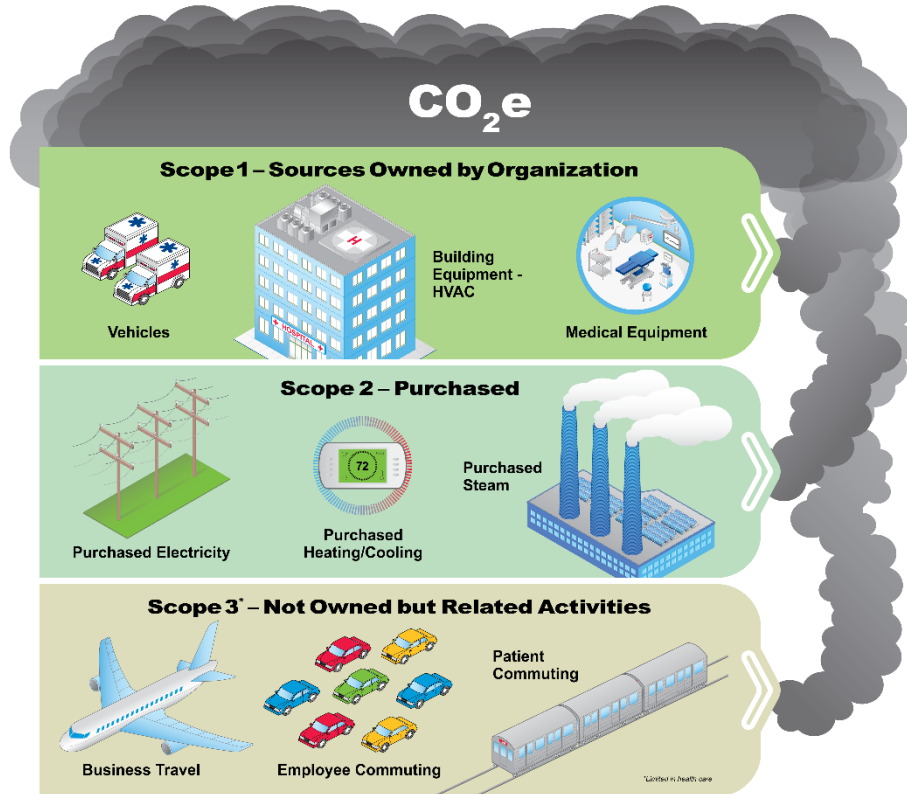


# GHG by Country

## CO<sub>2</sub>e Emissions by Country



# Sources of Greenhouse Gas Emissions



# ASHE's Tools and Resources

# ASHE's Sustainability Programs

---



# What is Energy to Care

---



*Greater efficiency supports patient care.*

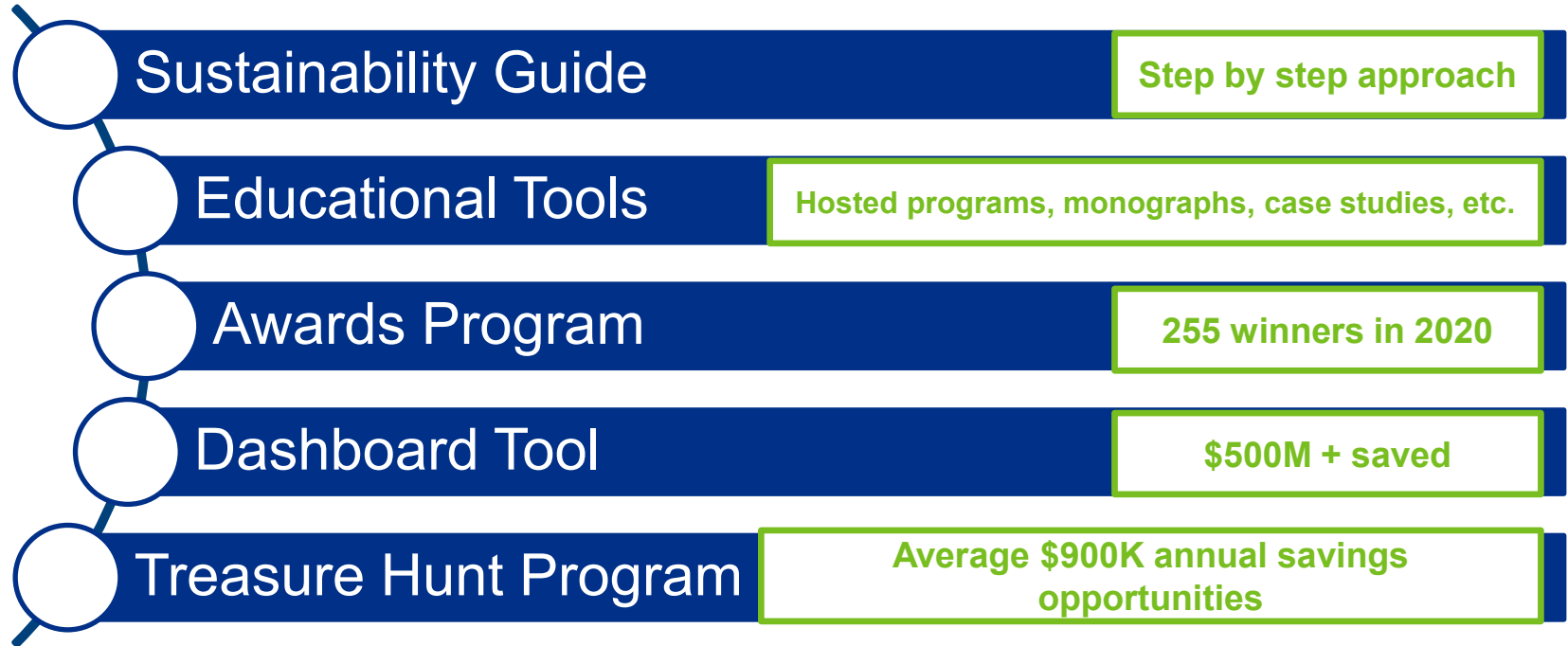
## Energy to Care

designed with an understanding of challenges and barriers :

- limited operating budget
- limited time to learn another program
- expectation of cross-functional proficiency



# The Value of the Energy to Care



[www.energytocare.org](http://www.energytocare.org)



# Energy to Care Dashboard



# Energy to Care Treasure Hunt

## Contact

[energytocare@aha.org](mailto:energytocare@aha.org)  
for more information

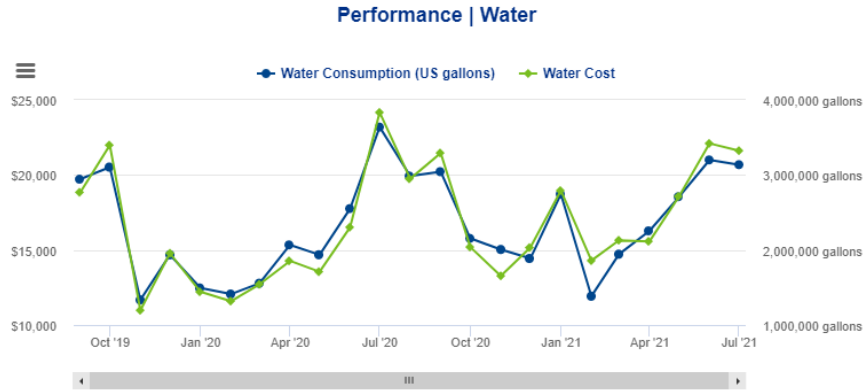


- Teams search for opportunities in 2 day event
- ASHE experts train participants
- Build teams
- Culture and behavior change
- Engage leadership



What's New?

# NEW! Dashboard Tracking



Energy Reduction is Equivalent to



Carbon Abatement **91**  
Tons of CO<sub>2</sub>e



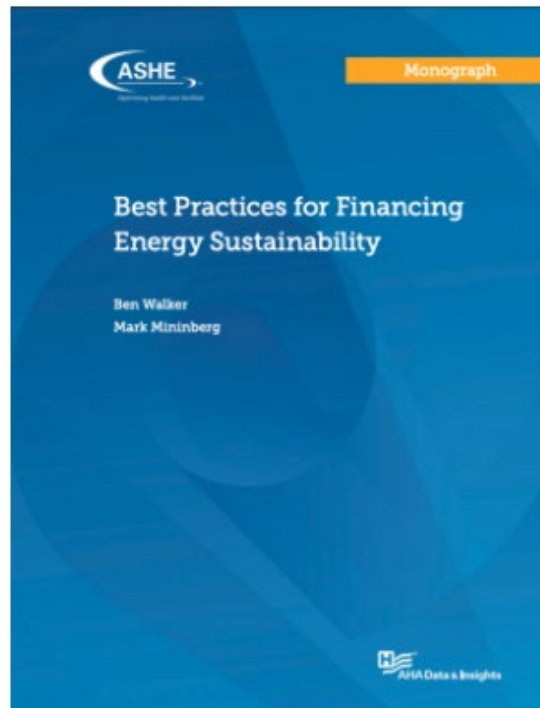
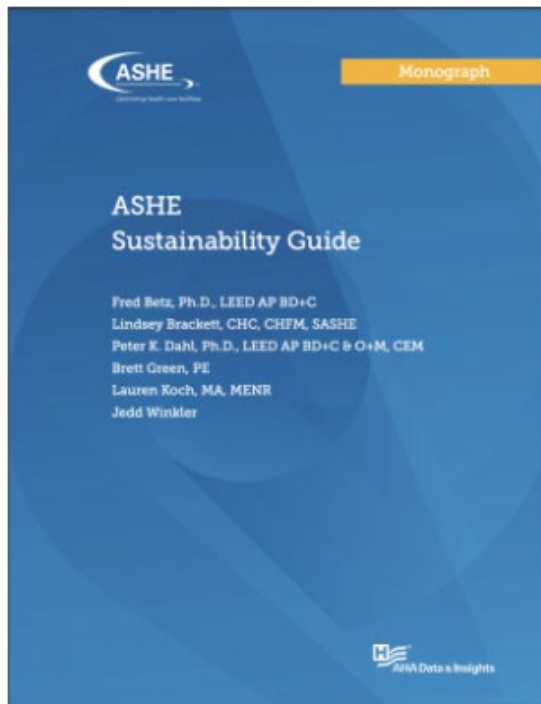
Taking **27**  
Cars Off the Road



Planting **5,710** Trees

# Monographs

---



# Sustainability Liaison Job Description

# Sustainability Liaison Position Intent

---

## Sustainability Liaison Position Intent

**Serves** and **acts** as Chapter Champion to raise awareness on the value of sustainability.

**Guides** or **connects** chapter members to ASHE resources.

**Guides** and **encourages** membership to maintain energy efficient criteria

**Provides** guidance and **coaches** members in data gathering to encourage participation in Energy to Care.

**Encourages** the use of Energy to Care resources to achieve energy efficiencies and ideally cost savings.



# Sustainability Liaison Job Functions

---

## Sustainability Liaison Job Functions

**Serve** as a conduit to direct chapter members to ASHE sustainability resources and programs.

**Encourage** the chapter education committee to provide opportunities for Sustainability Education

**Encourage** chapter members to apply for the Energy to Care Awards and Energy Champion Award.

**Develop**, drive, and promote an ASHE Chapter Challenge to encourage savings and achieve awards for savings achieved.



# Sustainability Liaison Job Functions

---

## Sustainability Liaison Job Functions

**Provide** updates and communicate success stories, best practices, and case studies

**Attend** quarterly Sustainability webinars

**Provide** sustainability updates to chapter membership and Regional Directors

**Encourage** chapter members to become ASHE members



# Bringing Back the Chapter Challenge

# Energy to Care Chapter Challenge

---



## 2020 Chapter Challenge Winners



**Large Category:** California Society for Healthcare Engineering, Inc. and Ohio Society for Healthcare Facilities Management

**Small Category:** The New England Healthcare Engineers' Society, Inc.

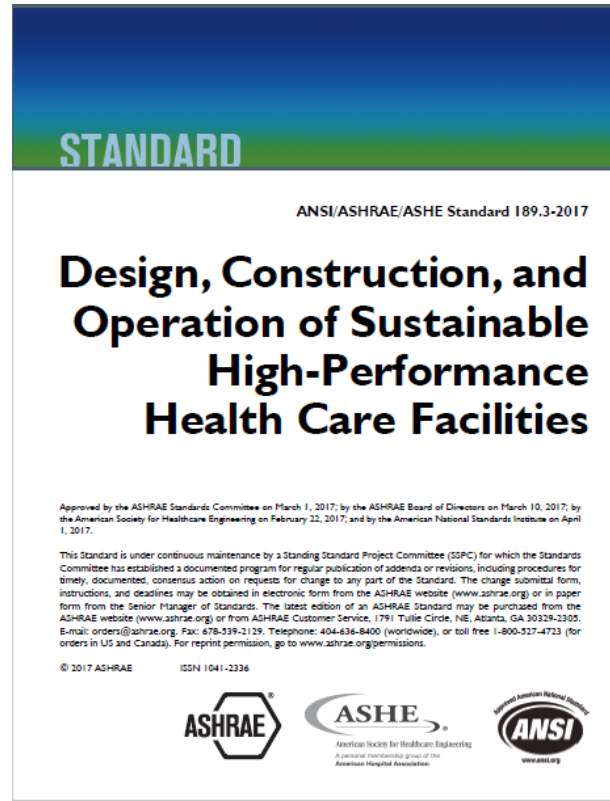
## Need your input!

- 2022 based on 2021 data – retroactive?
- 2023 based on 2022 data will go on as normally planned



Volunteers  
**NEEDED**

# ANSI/ASHRAE/ASHE Standard 189.3



# Project Firstline

# Project Firstline – CDC National Training Collaboration



## Project Firstline

[Ashe.org/project-firstline](https://ashe.org/project-firstline)



### CLINICAL STAFF

Resources on infection prevention and ventilation for clinical staff.

[Access >](#)



### FACILITIES MANAGERS

Resources on ventilation and negative pressure rooms for health care facilities managers.

[Access >](#)



### CONTRACTORS/ TECHNICIANS

Resources on ventilation and negative pressure rooms for outside contractors and technicians.

[Access >](#)

# Upcoming Events

# Energy to Care Newsletter!

---



October 6, 2021

*Welcome to the first issue of the Energy to Care Quarterly Newsletter. We hope it inspires you to reduce energy consumption, providing value to your organization and improving patient care.*

---

# ASHE Conferences

---



March 20-23, 2022  
New Orleans, LA  
Call for Abstracts  
opening soon!



Virtual Sessions Available On Demand through  
December 31, 2021

# Questions or Discussion?

---





# Thank you!

© 2021 American Society for Health Care Engineering,  
a professional membership group of the American Hospital Association  
155 N. Wacker Drive, Suite 400 | Chicago, IL 60606  
ashe.org | ashe@aha.org | 312-422-3800

